

# ROSE PRECISION

## SPHERICAL BEARINGS

## ROD ENDS

ground track

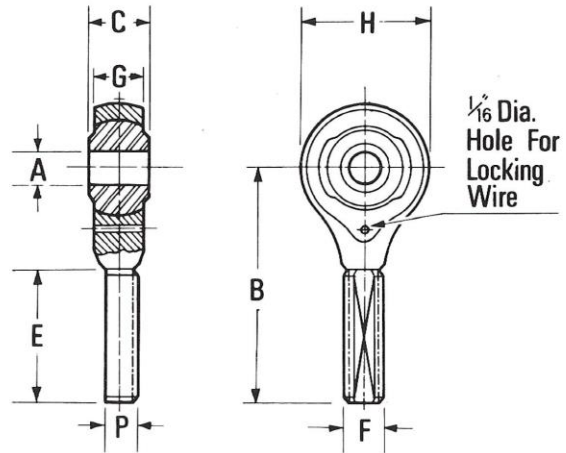
### SPECIFICATION

**HOUSING** S94, S95, OR S96 STEEL.

**FINISH** CADMIUM PLATED EXCEPT ON BEARING SURFACE TO SPECIFICATION DTD 904C.

**BALL** ONE PER CENT CARBON CHROMIUM STEEL (EN31 OR EQUIVALENT) HEAT TREATED TO 60/62 ROCKWELL 'C'.

ALL DIMENSIONS GIVEN IN INCHES.



## RBJ 300 aircraft series male thread

BEARING NUMBER	A.G.S. REF. No.	A	B	C	E	F		G	H	P	Ball Diameter	Maximum Static Load in Pounds Approx.	Weight in Pounds Approx.	
		Bore	Centre Length	Ball Width	Thread Length	Diam.	T.P.I. Hand	Housing Width	Head Diameter	Thread Flat				
		See Below	+ .020 - .020	+ .000 - .005	+ .050 - .000	CLASS 2A		+ .005 - .005	+ .000 - .010	+ .000 - .005	See Below			
RBJ 331	AGS 3070	.1120	.812	.218	.437	No. 6 UNC. .138	32	RH	.156	.437	.113	.312	520	.009
RBJ 332	AGS 3071	.1120	.812	.218	.437			LH	.156	.437	.113	.312	520	.009
RBJ 333	AGS 3072	.1380	.937	.240	.500	No. 8 UNC. .164	32	RH	.187	.500	.140	.343	830	.014
RBJ 334	AGS 3073	.1380	.937	.240	.500			LH	.187	.500	.140	.343	830	.014
RBJ 335	AGS 3074	.1640	1.125	.275	.625	No. 10 UNF. .190	32	RH	.218	.625	.165	.406	1,210	.024
RBJ 336	AGS 3075	.1640	1.125	.275	.625			LH	.218	.625	.165	.406	1,210	.024
RBJ 337	AGS 3076	.1900	1.375	.343	.750	1/2 UNF.	28	RH	.260	.750	.223	.500	2,250	.045
RBJ 338	AGS 3077	.1900	1.375	.343	.750			LH	.260	.750	.223	.500	2,250	.045
RBJ 339	AGS 3078	.2500	1.625	.406	.937	5/16 UNF.	24	RH	.320	.875	.281	.625	3,600	.077
RBJ 340	AGS 3079	.2500	1.625	.406	.937			LH	.320	.875	.281	.625	3,600	.077
RBJ 341	AGS 3080	.3125	1.875	.468	1.125	3/8 UNF.	24	RH	.380	1.000	.343	.720	5,540	.120
RBJ 342	AGS 3081	.3125	1.875	.468	1.125			LH	.380	1.000	.343	.720	5,540	.120
RBJ 343	AGS 3082	.3750	2.375	.625	1.500	1/2 UNF.	20	RH	.510	1.250	.464	.937	10,150	.265
RBJ 344	AGS 3083	.3750	2.375	.625	1.500			LH	.510	1.250	.464	.937	10,150	.265
RBJ 345	AGS 3084	.5000	3.125	.843	1.875	5/8 UNF.	18	RH	.640	1.687	.586	1.250	16,400	.578
RBJ 346	AGS 3085	.5000	3.125	.843	1.875			LH	.640	1.687	.586	1.250	16,400	.578
RBJ 347	AGS 3086	.6250	3.750	.937	2.250	3/4 UNF.	16	RH	.760	2.000	.706	1.437	23,900	1.030
RBJ 348	AGS 3087	.6250	3.750	.937	2.250			LH	.760	2.000	.706	1.437	23,900	1.030
RBJ 349	AGS 3088	.7500	4.375	1.000	2.750	7/8 UNF.	14	RH	.812	2.187	.825	1.500	32,800	1.305
RBJ 350	AGS 3089	.7500	4.375	1.000	2.750			LH	.812	2.187	.825	1.500	32,800	1.305

### LIMITS

Bore of ball "A":

AGS 3070 to AGS 3085 ± .00025"  
AGS 3086 to AGS 3089 + .0005"  
- .00025"

Diametral clearance:

AGS 3070-81 ball free but diametral clearance not to exceed .0004"  
AGS 3082-89 ball free but diametral clearance not to exceed .0008"

For further information refer to Technical index.